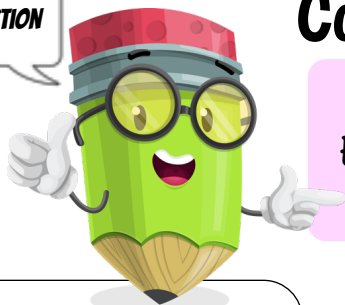


Fractions

Name: _____

Date: _____

NOW COMPLETE THE
EQUIVALENT FRACTION
PAIRS



And now
for the
answers!
♥

Complete Equivalent Fraction Pairs A

Example: $\frac{3}{5} = \frac{6}{10}$

(Note: Multiplication factors of x2 are shown above and below the equals sign.)

What did I multiply 5 by to get the new denominator here? Do the same to the numerator and complete the equivalent fraction pair.

1. $\frac{2}{3} = \frac{8}{12}$

(Note: Multiplication factors of x4 are shown above and below the equals sign.)

2. $\frac{3}{4} = \frac{12}{16}$

(Note: Multiplication factors of x4 are shown above and below the equals sign.)

3. $\frac{2}{3} = \frac{10}{15}$

(Note: Multiplication factors of x5 are shown above and below the equals sign.)

4. $\frac{4}{5} = \frac{16}{20}$

(Note: Multiplication factors of x4 are shown above and below the equals sign.)

5. $\frac{1}{2} = \frac{10}{20}$

(Note: Multiplication factors of x10 are shown above and below the equals sign.)

6. $\frac{4}{5} = \frac{20}{25}$

(Note: Multiplication factors of x5 are shown above and below the equals sign.)

7. $\frac{6}{7} = \frac{18}{21}$

(Note: Multiplication factors of x3 are shown above and below the equals sign.)

8. $\frac{5}{10} = \frac{40}{80}$

(Note: Multiplication factors of x8 are shown above and below the equals sign.)

9. $\frac{1}{4} = \frac{6}{24}$

(Note: Multiplication factors of x6 are shown above and below the equals sign.)

10. $\frac{5}{8} = \frac{30}{48}$

11. $\frac{2}{5} = \frac{22}{55}$

12. $\frac{3}{7} = \frac{12}{28}$

13. $\frac{2}{9} = \frac{18}{81}$

(Note: Multiplication factors of x9 are shown above and below the equals sign.)

14. $\frac{5}{7} = \frac{35}{49}$

15. $\frac{8}{9} = \frac{32}{36}$

16. $\frac{5}{11} = \frac{15}{33}$

17. $\frac{6}{11} = \frac{54}{99}$

(Note: Multiplication factors of x9 are shown above and below the equals sign.)

18. $\frac{3}{8} = \frac{21}{56}$

(Note: Multiplication factors of x7 are shown above and below the equals sign.)

19. $\frac{4}{7} = \frac{44}{77}$

20. $\frac{9}{10} = \frac{36}{40}$

21. $\frac{8}{9} = \frac{72}{81}$

(Note: Multiplication factors of x9 are shown above and below the equals sign.)

22. $\frac{7}{12} = \frac{42}{72}$

23. $\frac{9}{11} = \frac{81}{99}$

I HOPE YOU DID GREAT!



Want to review video?
Click PLAY button

