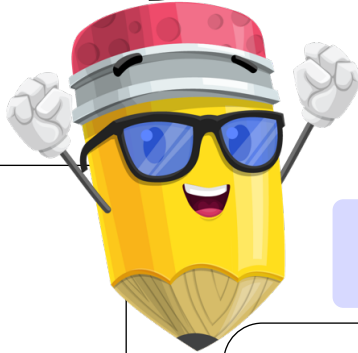


# Fractions

Name: \_\_\_\_\_

Date: \_\_\_\_\_

YOU  
GOT THIS!



## 4. Improper Fraction to Mixed Number ©

**Remember:**  
after you make the mixed number, reduce if you can!

1.  $\frac{79}{8} =$

2.  $\frac{17}{9} =$

3.  $\frac{31}{11} =$

4.  $\frac{40}{12} =$

5.  $\frac{44}{12} =$

6.  $\frac{114}{10} =$

7.  $\frac{47}{11} =$

8.  $\frac{60}{12} =$

9.  $\frac{45}{9} =$

10.  $\frac{111}{11} =$

11.  $\frac{68}{8} =$

12.  $\frac{105}{9} =$

13.  $\frac{50}{12} =$

14.  $\frac{84}{8} =$

15.  $\frac{42}{9} =$

16.  $\frac{102}{10} =$

17.  $\frac{77}{11} =$

18.  $\frac{26}{12} =$

19.  $\frac{48}{15} =$

20.  $\frac{24}{20} =$

21.  $\frac{36}{16} =$

22.  $\frac{42}{8} =$

23.  $\frac{132}{11} =$

24.  $\frac{146}{12} =$

25.  $\frac{82}{8} =$